

Solutions supplied for handling rails up to 480 feet in length.

No limitations in duty cycle.
Residual magnetism is irrelevant for subsequent processes (welding).

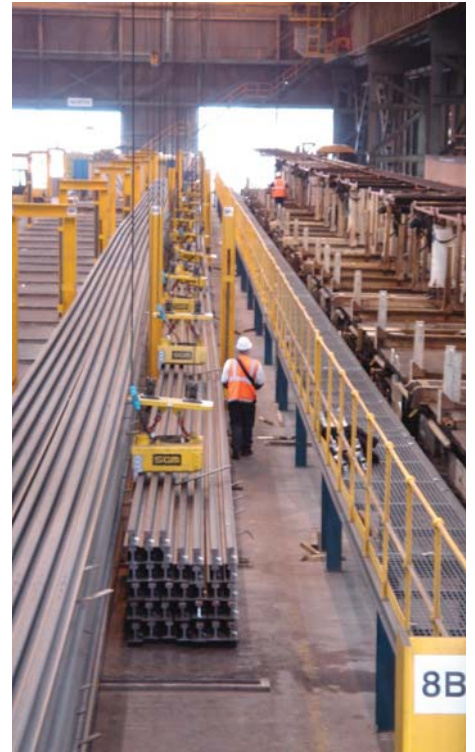
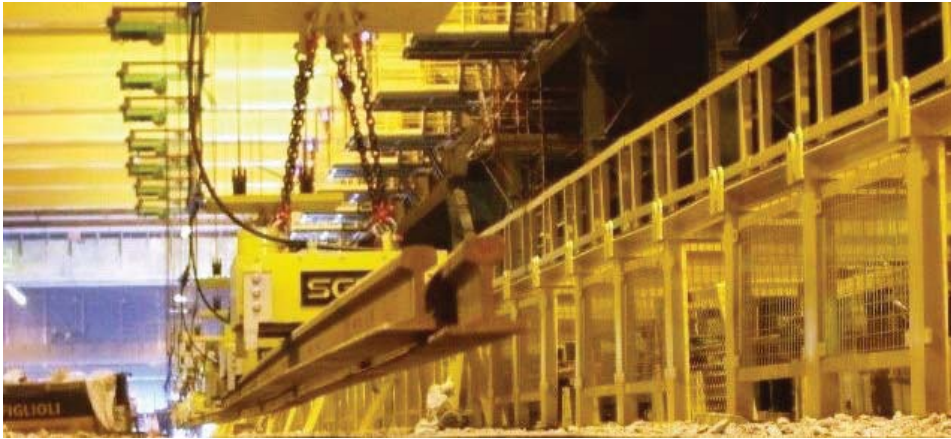
Absolute safety

- The lifting force of the Electro-permanent magnets is independent from external energy sources = no accidental drops of the load as a result of power failure or cable interruption.
- The lifting force of the electro-permanent magnet is constant in time = no accidental drops of the load as a result of a reduction in magnet lifting force.
- No need for operator to get in contact with the rail(s), cross and stay by them or on the rail wagon. Magnet system is operated from a safe distance using radio control. No need for clamps.
- Technology of the electro-permanent magnet controllers facilitates the creation of safety redundancy.
- Special recommendation for the use of electro-permanent magnets is made for locations where sudden interruptions of main electrical power may happen inadvertently.



Productivity

- Any length of rail will be released from the electro-permanent magnet(s) in just 3 seconds.
- No limits in length of rail which can be handled.
- Unlike electro-magnets, electro-permanent magnets do not generate heat when energized which means that they do not impose limitations on duty cycle.



User friendly

- Operation is typically through radio control.
- Simplicity in pre-selecting the required quantity of electro-permanent magnets to be used on any given length of rail.



- Unlike electro-magnets, the level of residual magnetism left in the rail(s) is irrelevant for subsequent processes (welding).
- The electronic controllers for electro-permanent

magnets are technologically less sophisticated than the ones for electro-magnets.

This, combined with the fact that unlike electro-magnets, electro-permanent magnets do not generate heat when energised, makes the electro-permanent magnet technology easier to maintain. No need for battery back-up.

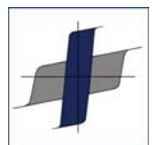
SGM acknowledges Corus Rail on the use of their pictures.



Designed and manufactured according to European standards EN 13155.

USA
SGM Magnetics Corp.
Sarasota, FL 34240
Office: 941/342-8800
Email: sgm.magnets@verizon.net

Refer to website for your local SGM subsidiary
www.sgm-magnetics.com



SGM